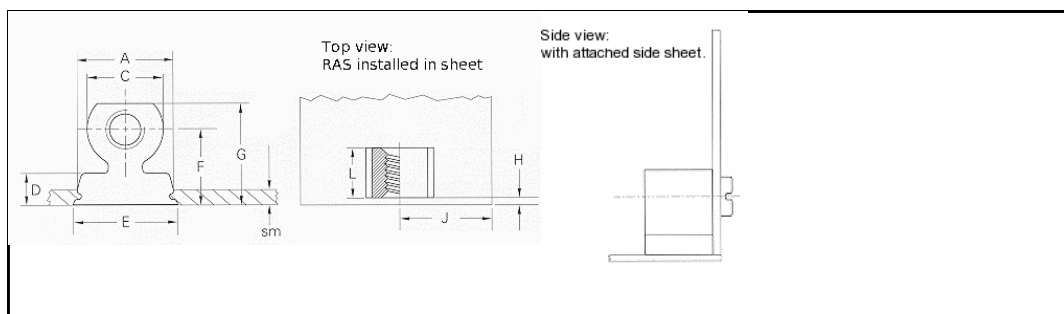


## Data sheet - RAS-M4-9-4

### Right angle clinch fasteners



3D-Data available	
Tread code	M4 x 0.7
Order description	RAS-M4-9-4
A ±0.08	9.89 mm
C nom.	8.89 mm
D nom.	3.18 mm
E ±0.15	11.48 mm
F ±0.15	9 mm
G nom.	13.21 mm
Min. edge distance H	1.02 mm
Min. edge distance J	10.0 mm
Min. sm	1.0 mm
L ±0.08	3.89 mm
Hole size in the sheet +0.05 -0.03	10 x 4 mm
Material	Sintered zinc-plated steel.
Use	For sheet hardnesses up to HRB 60.
Tools	
Insertion machines	

uniform resource locator: