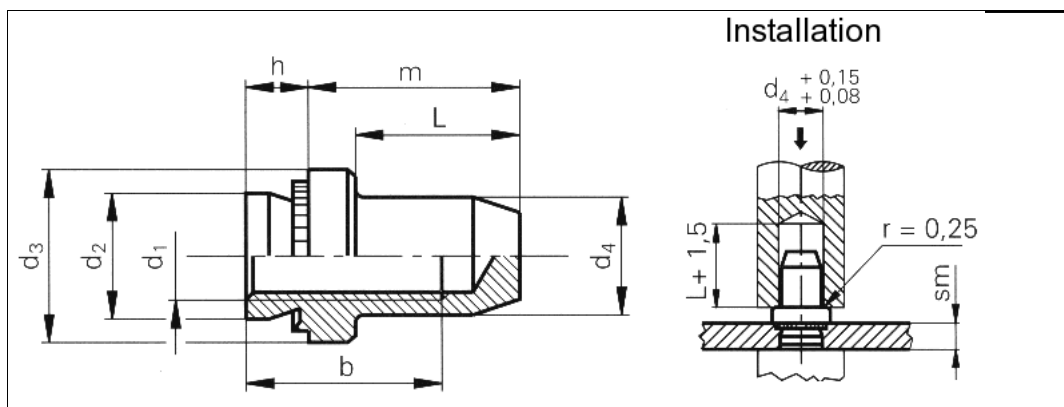


Data sheet - B-M4-1

Blind self-clinching nuts



3D-Data available	
Order description	B-M4-1
Thread d1	M4
Hole-Ø in the sheet +0.08 0	5.40 mm
Max. d2	5.38 mm
d3 ±0.25	7.95 mm
Max. d4	5.20 mm
Min. b	7.1 mm
Max. L	9.8 mm
m ±0.25	11.2 mm
Max. h	0.97 mm
Min. sm	1.0 mm
Min. edge distance up to the hole centre	6.9 mm
Material	Case-hardened zinc-plated carbon steel.
Use	For sheet hardnesses up to HRB 80.
Information	Closed thread end protects against contamination etc.
Tools	
Insertion machines	

uniform resource locator: